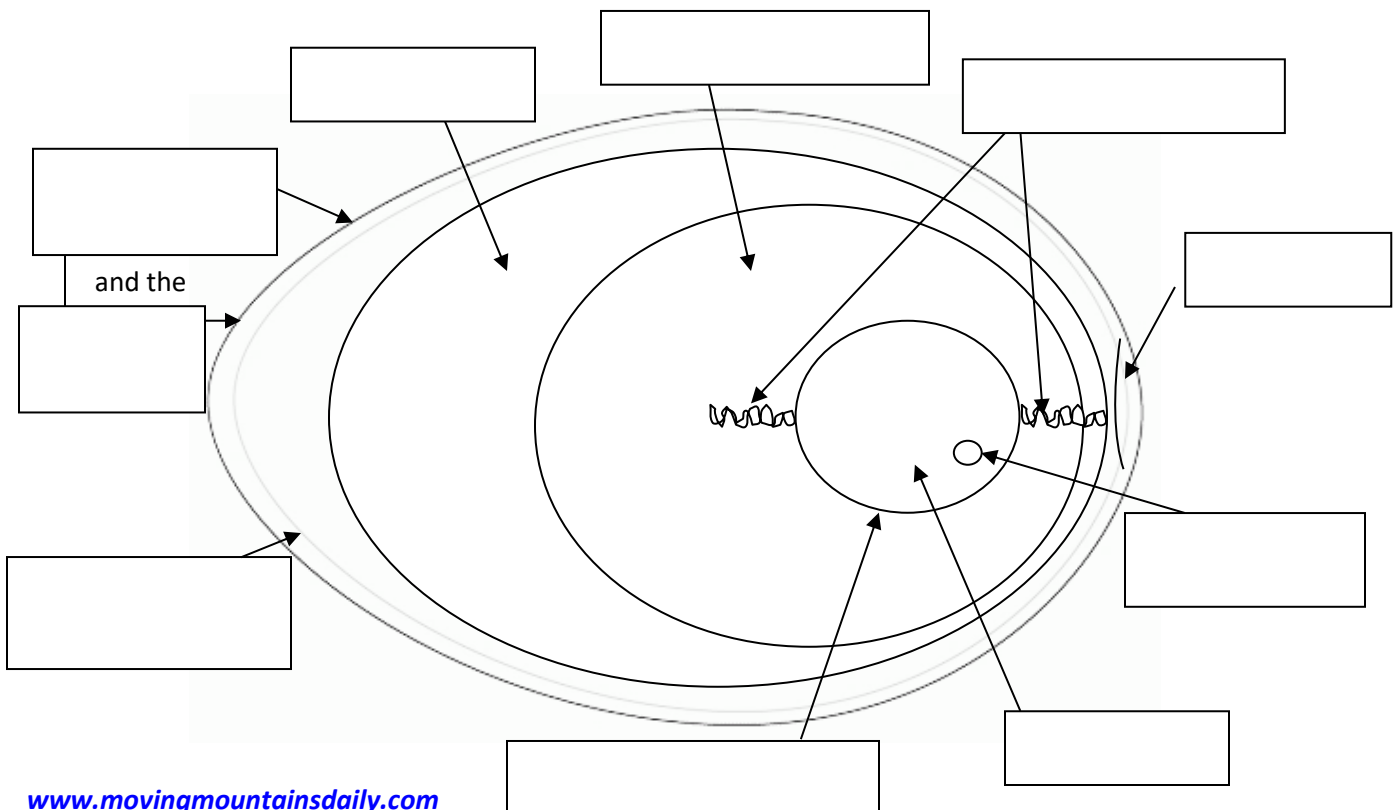
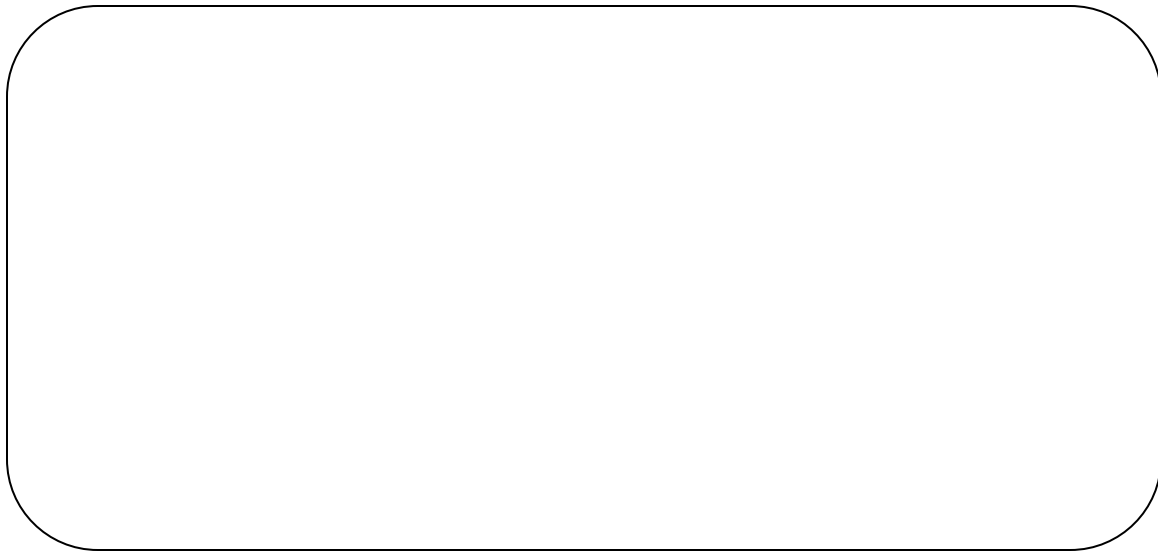


The art of observation.

When scientists observe and take notes, they gain information.



- Crack open the egg.
- Observe closely using your magnifying glass.
- Draw what you observe below. Color the parts that need color.



Shell Membranes	Outer Shell	Chalazae Ropes	Chalaziferous White	Yolk
Germinal Disc	Cuticle or Bloom	Vitelline Membrane	Thin Albumin	Air Cell